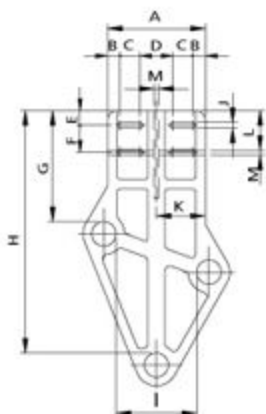
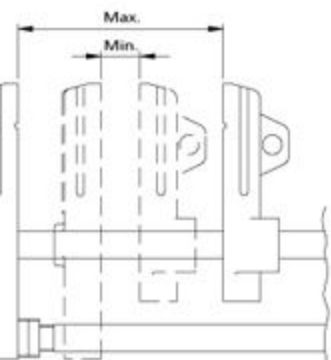


PBS-305 / 405 / 505 (S / D / T / Q)

- ❖ 依不同塑料材質如。PE, PP, PVC, PS, PC NYLON等設計各機構，適合生產中小容量之各種容器，可長時間高效率全自動生產。
- ❖ 10" TFT彩色LCD觸控螢幕人機介面電控系統，操作簡易富人性化。
- ❖ Custom design is available to suit various plastic materials such as PE, PP, PVC, PS, PC and nylon. Designed for producing medium and small sized containers. Highly efficient automatic long production runs.
- ❖ 10" TFT colorful LCD touch screen combined with human-machine interface control system for user-friendly operations.



Model No.	型號	Unit	PBS-305S
Product capacity	產品容量	C.C.	50-500
Product diameter	產品直徑	mm	20-80
Screw diameter	螺桿直徑	mm	40
Screw L / D ratio	螺桿比例		22/1
Inverter motor	變頻馬達	HP	7.5
Screw rotation speed	螺桿轉速	r.p.m.	15-65
Extruding capacity	押出量	kg/hr	14
Max. Die mouth diameter	最大模嘴外徑	mm	40
Mould center distance	模中心距	mm	-
Clamping force	鎖模壓力	ton	2.4
Hydraulic drive motor	油壓驅動馬達	HP	5
Dry cycle	空循環	sec.	2.6
Air pressure	空氣壓力	Bar	6-8
Air consumption	空氣消耗量	L/min	500
Total power consumption	總電力	kw/h	14.4
Machine net weight	機械淨重	kg	1,400
Gross weight	裝箱毛重	kg	1,900
Machine dimensions	機械尺寸	m	2.3x1.5x2.2



模板尺寸圖
MOLD PLATEN DIMENSIONS

UNIT:mm

NO.	PBS-305	PBS-405	PBS-505	NO.	PBS-305	PBS-405	PBS-505
Max.	230	320	420	G	225	310	300
Min.	60	60	80	H	496	640	624
A	200	260	300	I	150	200	240
B	25	55	45	J	12	15	16
C	40	40	60	K	100	130	150
D	70	70	90	L	86	75	86
E	30	40	40	M	10	10	10
F	55	70	92				

配合模內貼標機之使用開關模尺寸另訂
For use with in-mold labeling machine.
Open-close clamping mold is specified upon request.

PBS-305D	PBS-305T	PBS-405S	PBS-405O	PBS-405T	PBS-405Q	PBS-505S	PBS-505D	PBS-505T	PBS-505Q
30-200	10-100	80-1,000	50-500	30-200	10-100	450-2,500	200-1,000	50-500	30-200
15-65	8-30	30-100	20-80	15-65	8-30	45-150	30-100	20-80	15-65
40	40	45	45	45	45	55	55	55	55
22/1	22/1	24/1	24/1	24/1	24/1	24/1	24/1	24/1	24/1
7.5	7.5	10	10	10	10	15	15	15	15
15-65	15-65	15-65	15-65	15-65	15-65	15-65	15-65	15-65	15-65
14	14	24	24	24	24	36	36	36	36
35	25	55	40	35	25	80	50	40	35
85	75	-	100	85	75	-	120	100	85
2.4	2.4	4.5	4.5	4.5	4.5	5.3	5.3	5.3	5.3
5	5	5-7.5	5-7.5	5-7.5	5-7.5	7.5-10	7.5-10	7.5-10	7.5-10
2.6	2.6	3	3	3	3	3.3	3.3	3.6	3.6
6-8	6-8	6-8	6-8	6-8	6-8	6-8	6-8	6-8	6-8
500	500	600	600	600	600	700	700	700	700
15.9	16.3	21.5	21.9	24.7	26.3	29.0	31.2	33.3	33.4
1,400	1,400	2,500	2,500	2,500	2,500	3,700	3,700	3,700	3,700
1,900	1,900	3,000	3,000	3,000	3,000	4,200	4,200	4,200	4,200
2.3x1.5x2.2	2.4x1.6x2.2	2.8x2.1x2.3	2.8x2.1x2.3	2.9x2.2x2.3	2.9x2.2x2.3	3.2x1.8x2.3	3.2x1.8x2.3	3.4x2.5x2.5	3.4x2.5x2.5

以上規格如因設計變更恕不另行通知
All specifications and designs are subject to change without notice.